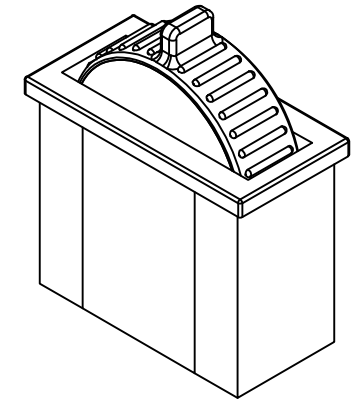
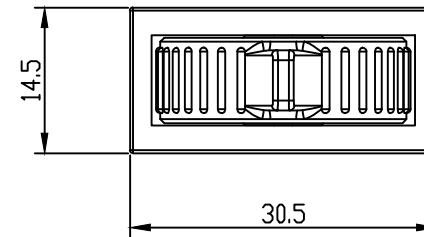
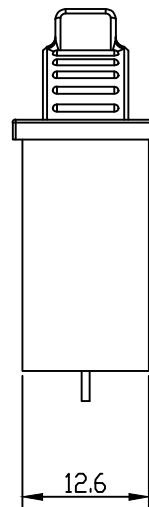
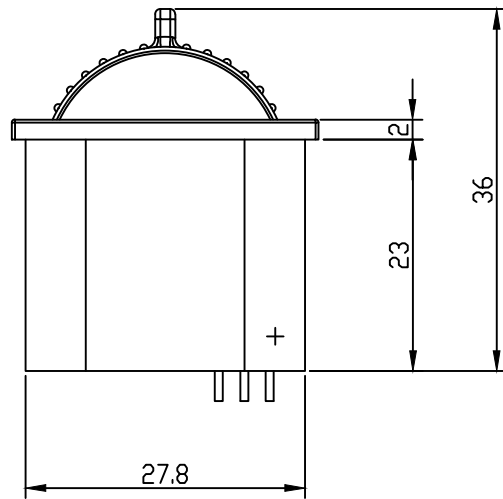


16	17	18	19	20
记号:	变更原因	签认日期		
A1				
A2				



Product Introduction

This product adopts high-quality industrial grade ABS injection molding, non-contact Hall sensor thumb operation design, firm material, lightweight appearance, easy and flexible operation, long service life, and good protective performance. It achieves precise linear signal output through thumb operation.

1 Mechanical specifications

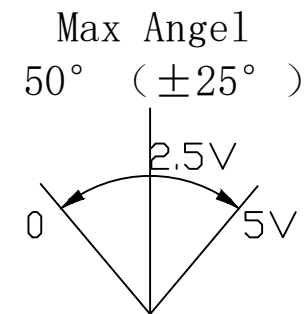
- 1.1 Main component materials: ABS
- 1.2 Weight: 30 grams (maximum)
- 1.3 Operating force: 0 to 3 N; Maximum allowable operating force: 35 N
- 1.4 Control range (self reset):
From the center position in any direction: $25^\circ \pm 2^\circ$.

2 Electrical specifications

- 2.1 Input voltage: +5VDC; Current: $\leq 50\text{mA}$;
- 2.2 Signal output:
Voltage: $0-5\text{VDC} \pm 5\%$;
Maximum output voltage 4.8VDC (minimum);
Minimum output voltage 0.2VDC (maximum);
Output signal impedance $1\text{K}\Omega$.

3 Environmental parameters

- 3.1 Working temperature: -40°C to $+70^\circ\text{C}$
- 3.2 Storage temperature: -45°C to $+75^\circ\text{C}$
- 3.3 Special temperature: can be customized according to requirements



White ——— OUT
Red ——— +5V
Black ——— GND

Pin definition
Cable length $800 \pm 50\text{mm}$

Model No.:MKF-TS19

Mate Technology Shenzhen Limited www.matend.com					
绘图:	1	20240115	Scale: 1:1	View:	
设计:	1	2	阶段标记	Unit:	mm
审核:	1	2			
批准:	1	2	第 1 页 共 1 页		