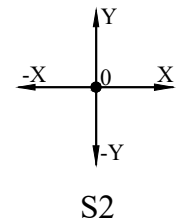
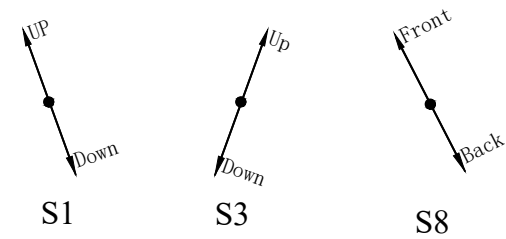
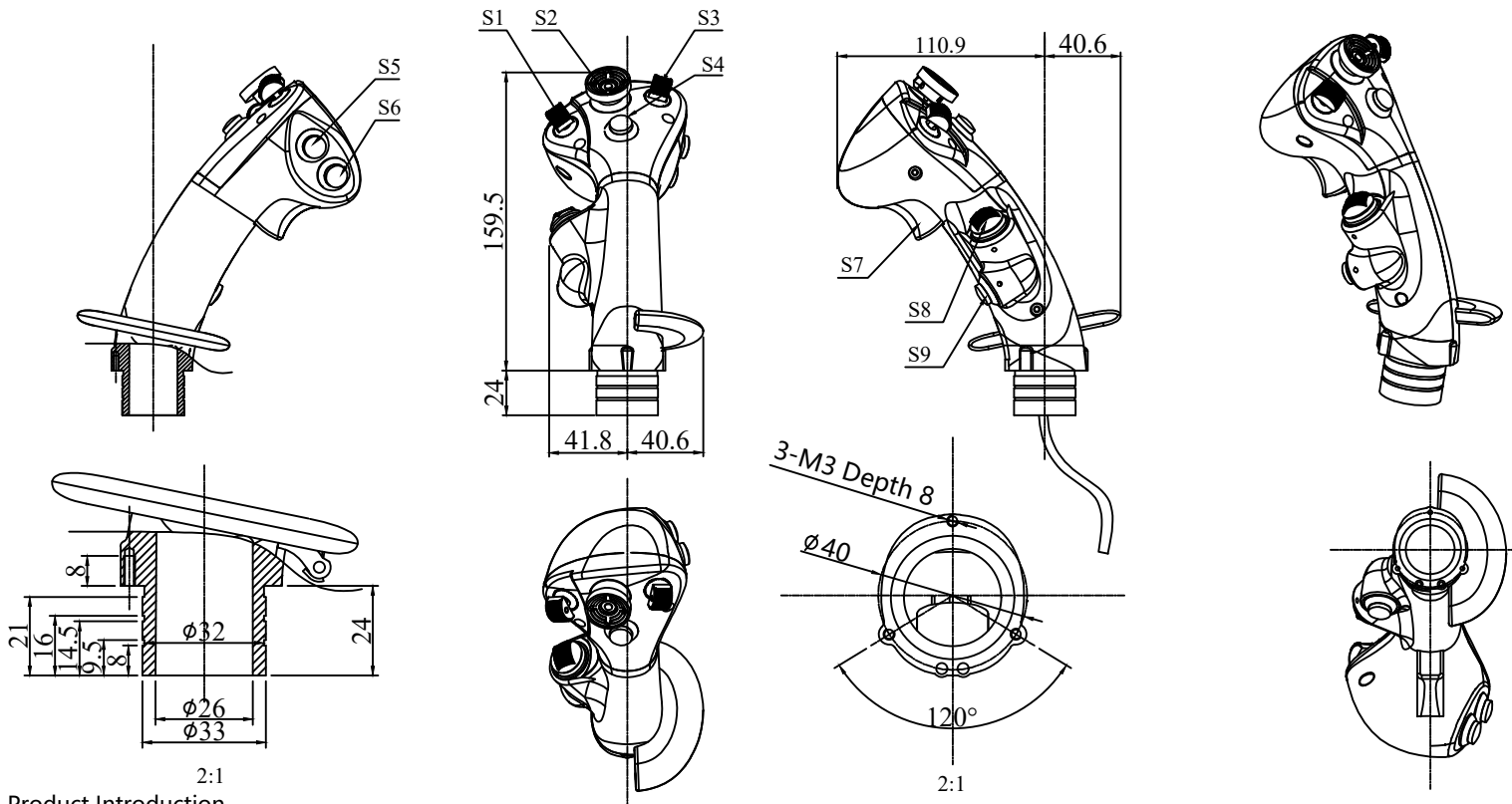


16	17	18	19	20
记号:	变更原因	签字	日期	
A1				
A2				



Product Introduction

This force sensitive control lever is made of high-quality aviation aluminum alloy material and is equipped with 7 switches and 1 highly reliable dynamic two-dimensional force sensitive control device. It has CAN output and can be operated by the thumb to quickly search, collect, and lock targets in complex environments. Specific functions can also be achieved through relevant switch buttons according to one's own needs.

1. Structural description:
 - 1.1 S1 and S3: Three speed self resetting toggle switch with black operating cap;
 - 1.2 S2: F-55N force sensitive sensor, black operating cap, operating force: 0-13N;
 - 1.3 S4, S5, S6, S9: Self reset button switch, normally open, black operating cap;
 - 1.4 S7: Red self resetting buckle switch;
 - 1.5 S8: Three speed self resetting toggle switch, black operating cap;
 - 1.6 External dimensions are shown in the figure on the right; Unit: millimeters;
 - 1.7 Main component materials: aluminum alloy, surface spray coating, black matte;
 - 1.8 Mass: 0.5KG;
 - 1.9 Mechanical life: 1 million times;

2. Electrical specifications:
 - 2.1 Electrical parameters:
 - Input voltage: +5VDC (anti reverse connection, anti surge);
 - Output: CAN (protocol attached separately);
 - 2.2 Wiring Definition: As shown in the figure on the right;
3. Environmental parameters:
 - 3.1 Working temperature: -40 °C to +70 °C;
 - 3.2 Storage temperature: -45 °C to +75 °C;
 - 3.3 Protection level: IP65;

VCC	———	Red
GND	———	Black
CAN_H	———	Green
CAN_L	———	White
SHIELD	———	Shielding (Shell ground)

Cable out
Cable length: 800±50mm

Model No.: MKF-FS04

Mate Technology Shenzhen Limited www.matend.com					
Draw:	1	20240116	Scale: 1:1	View:	
Design:	1	2	Stage	Unit:	mm
Audit:	1	2			
Approve:	1	2		Page 1	of 1